



## 68 Hollow Drive

Thornton, Liverpool, L23 4TD

**Prices from £345,995**



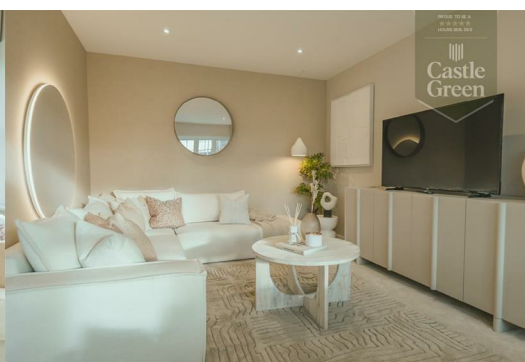
The Henley - DOUBLE FRONTED DETACHED home, OPEN PLAN LIVING with combined kitchen/dining area with EN-SUITE to master bedroom. PLOT 156 includes fantastic sales incentives to include quartz worktops to kitchen, flooring throughout and turf to rear.

EASYMOVE SCHEME AVAILABLE - Enquire on how we can help you sell your home - 5\* HBF Customer Satisfaction 2025

### About The Henley

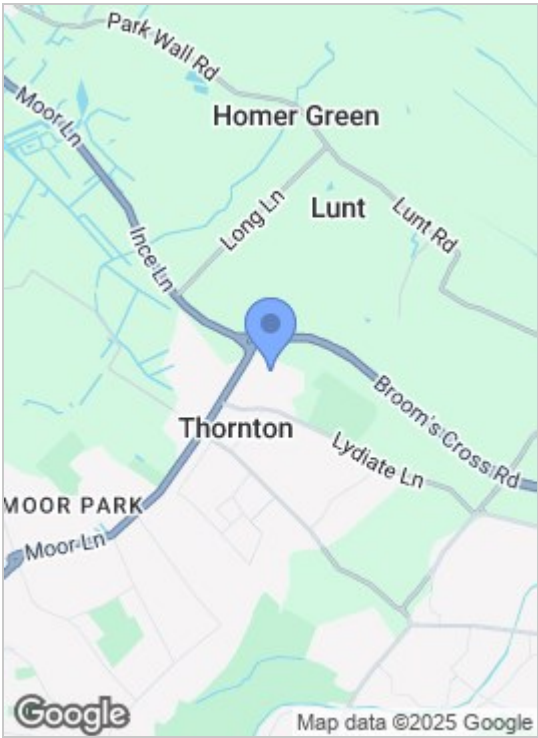
An ideal choice for those looking for open plan living, to the rear of the ground floor is a spacious kitchen & dining room, where French doors look out onto the garden. The separate lounge makes a comfortable area in which to unwind at the end of the day. Upstairs you'll find an exceptional master suite with an en suite shower room, alongside two other beautifully designed bedrooms and a family bathroom.

### About the Development

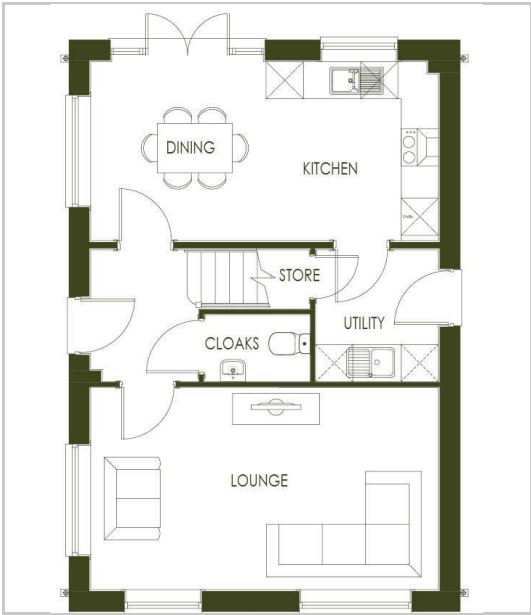


- Kitchen 9'5" x 9'1" (2.89 x 2.77)
- Dining 9'3" x 9'5" (2.82 x 2.89)
- Utility 6'11" x 6'5" (2.13 x 1.98)
- Lounge 18'4" x 10'8" (5.59 x 3.27)
- Cloaks 5'6" x 3'6" (1.70 x 1.08)
- Bedroom 1 11'3" x 9'8" (3.43 x 2.95)
- Bedroom 2 10'8" x 9'1" (3.27 x 2.78)
- Bedroom 3 10'8" x 9'0" (3.27 x 2.75)
- En-Suite 6'9" x 5'11" (2.07 x 1.81)
- Bathroom 6'11" x 5'6" (2.13 x 1.70)

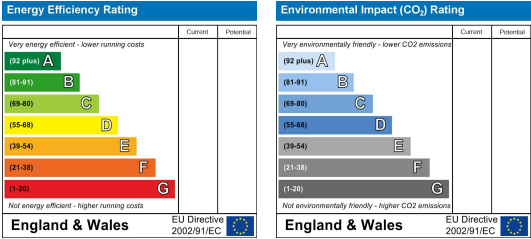
Area Map



Floor Plans



Energy Efficiency Graph



These particulars, whilst believed to be accurate are set out as a general outline only for guidance and do not constitute any part of an offer or contract. Intending purchasers should not rely on them as statements of representation of fact, but must satisfy themselves by inspection or otherwise as to their accuracy. No person in this firms employment has the authority to make or give any representation or warranty in respect of the property.